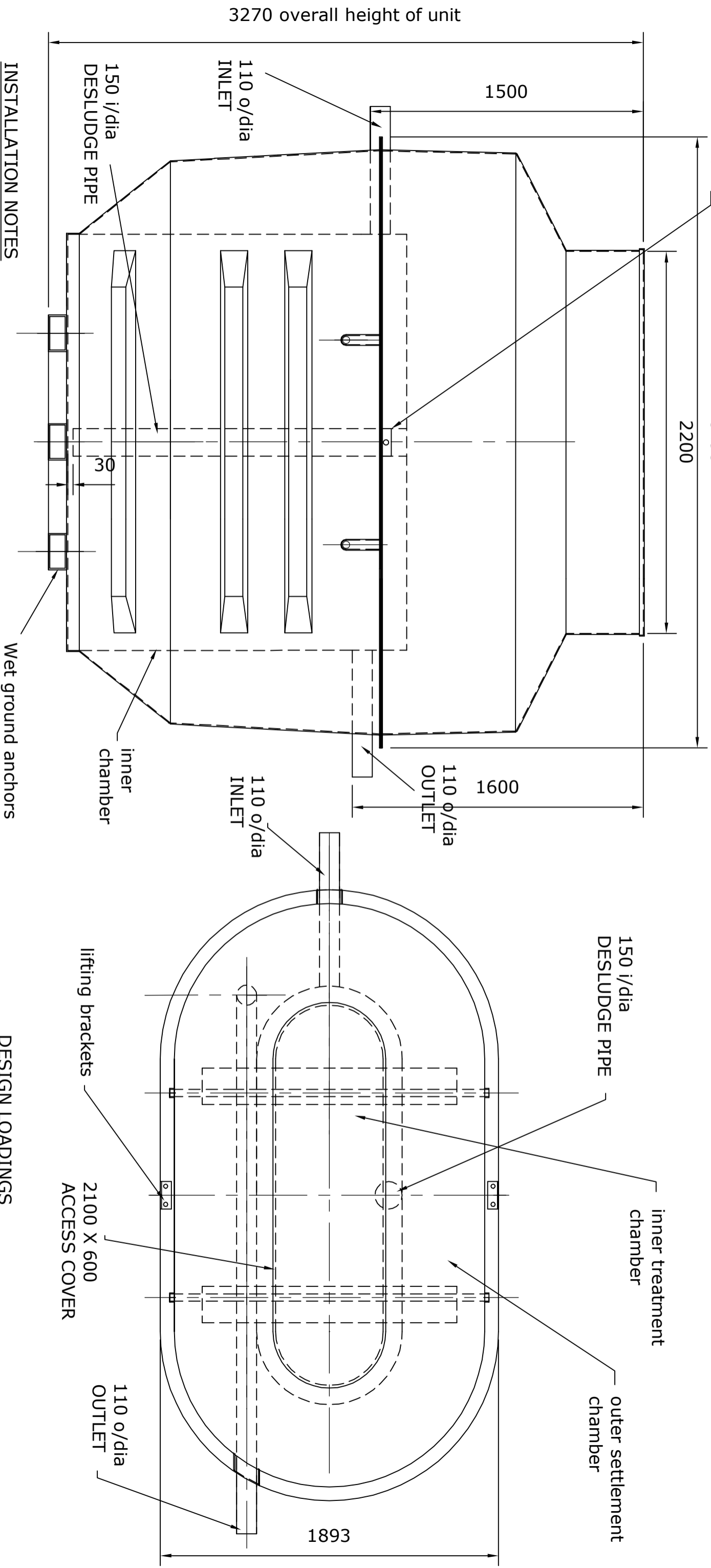


2 off lifting brackets (steel)  
attached to flange.

3493

# MODEL T18S4 BIODIGESTER



**INSTALLATION NOTES**

Excavation should allow approximately 300 mm around the units extremities, in this case :- 4.1 m x 2.5 m  
 Unit must be filled with water prior to backfilling.  
 Unit can be lowered in place by means of 2 off lifting brackets placed in main flange across the diameter.  
 In 'WET GROUND' conditions concrete should be poured to a min'm level of 250 mm above ground anchors.  
 Min'm concrete requirements for 'WET GROUND' conditions is :- 5.0 m<sup>3</sup>

**DESIGN LOADINGS**

Self supporting when full of water to outlet flange.  
 Withstand backfill loads (concrete or gravel) when full of water.  
 Withstand wet site up to outlet pipe level.  
 Maximum water capacity to invert of outlet = 6400 ltrs