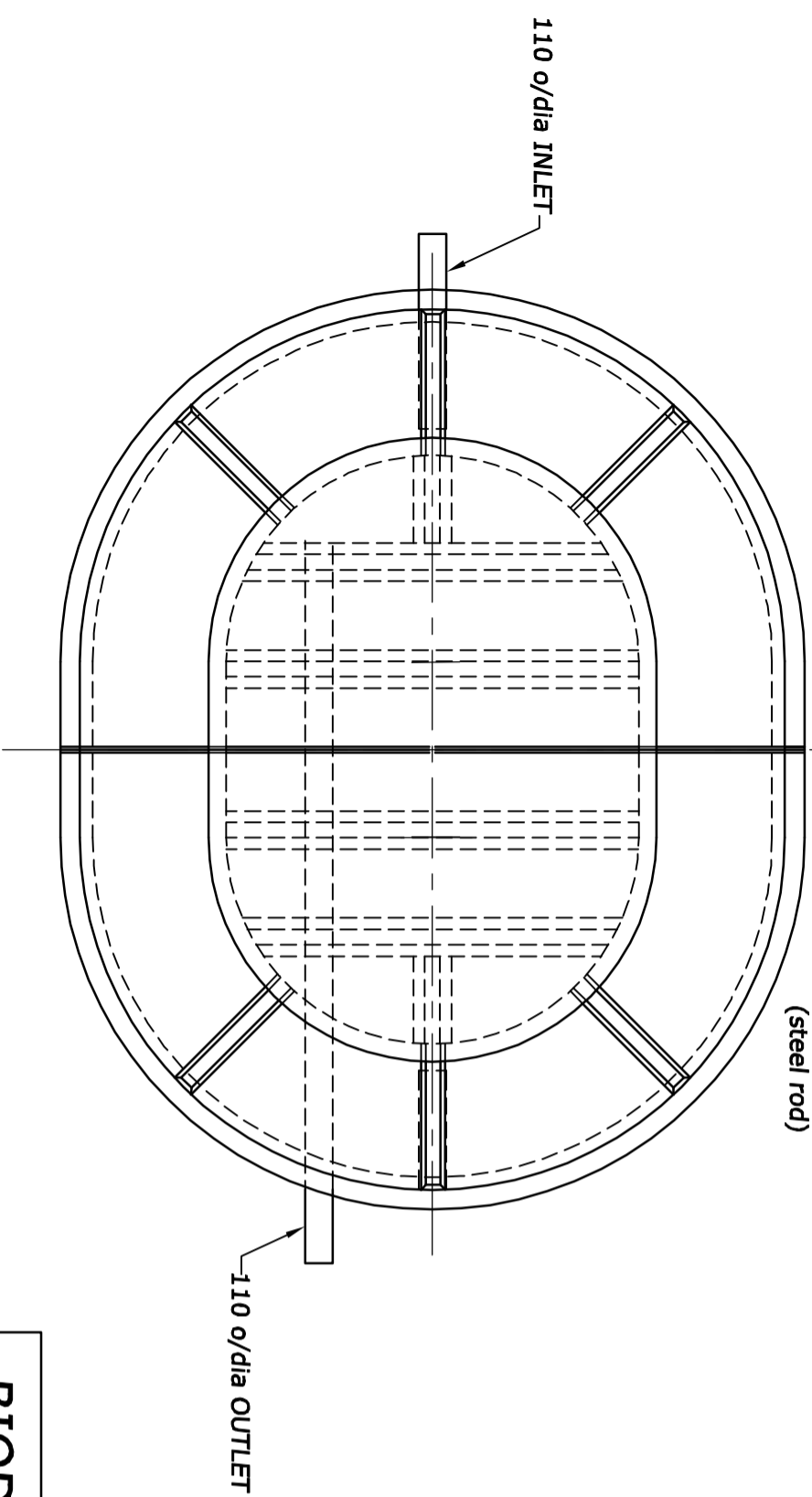
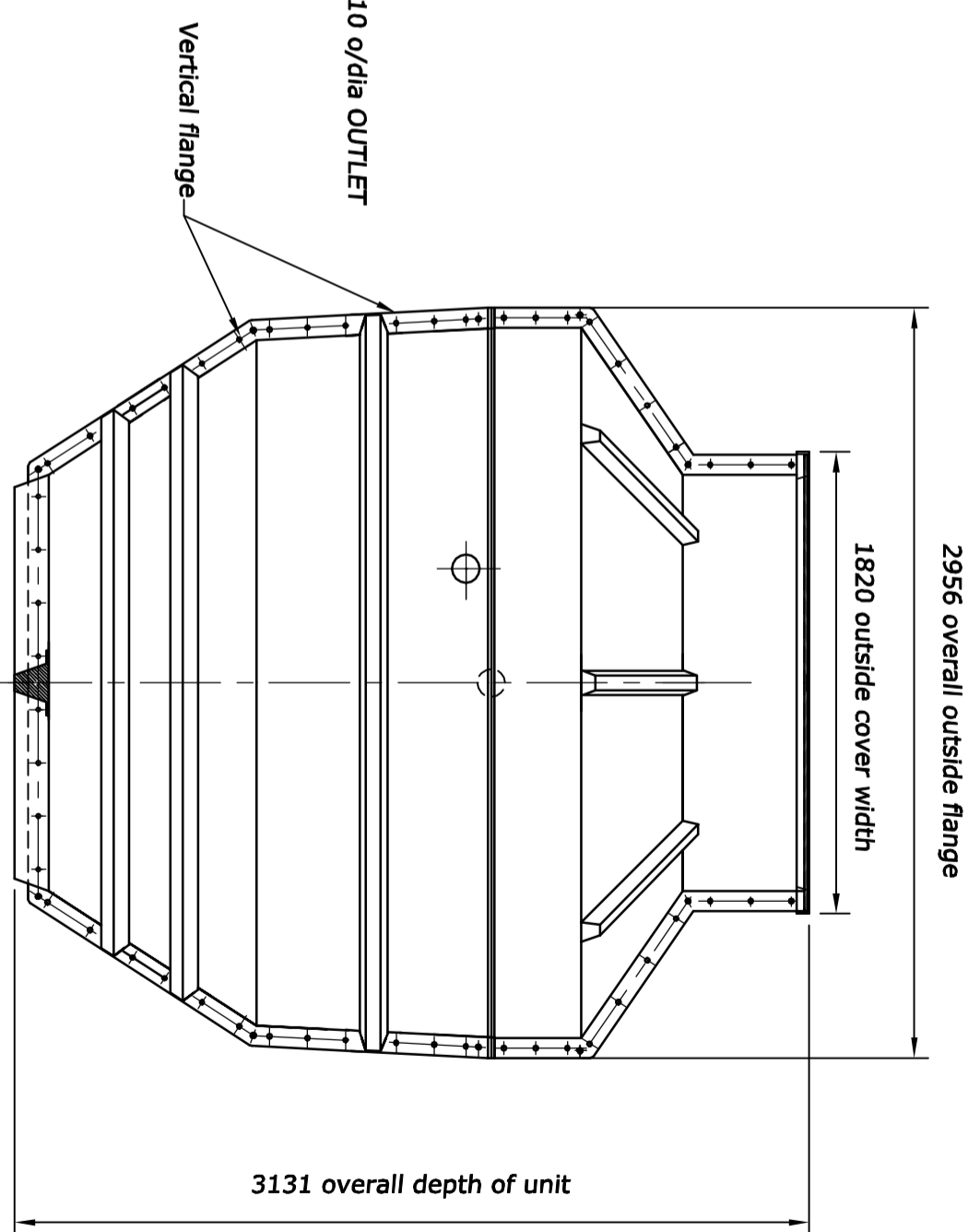
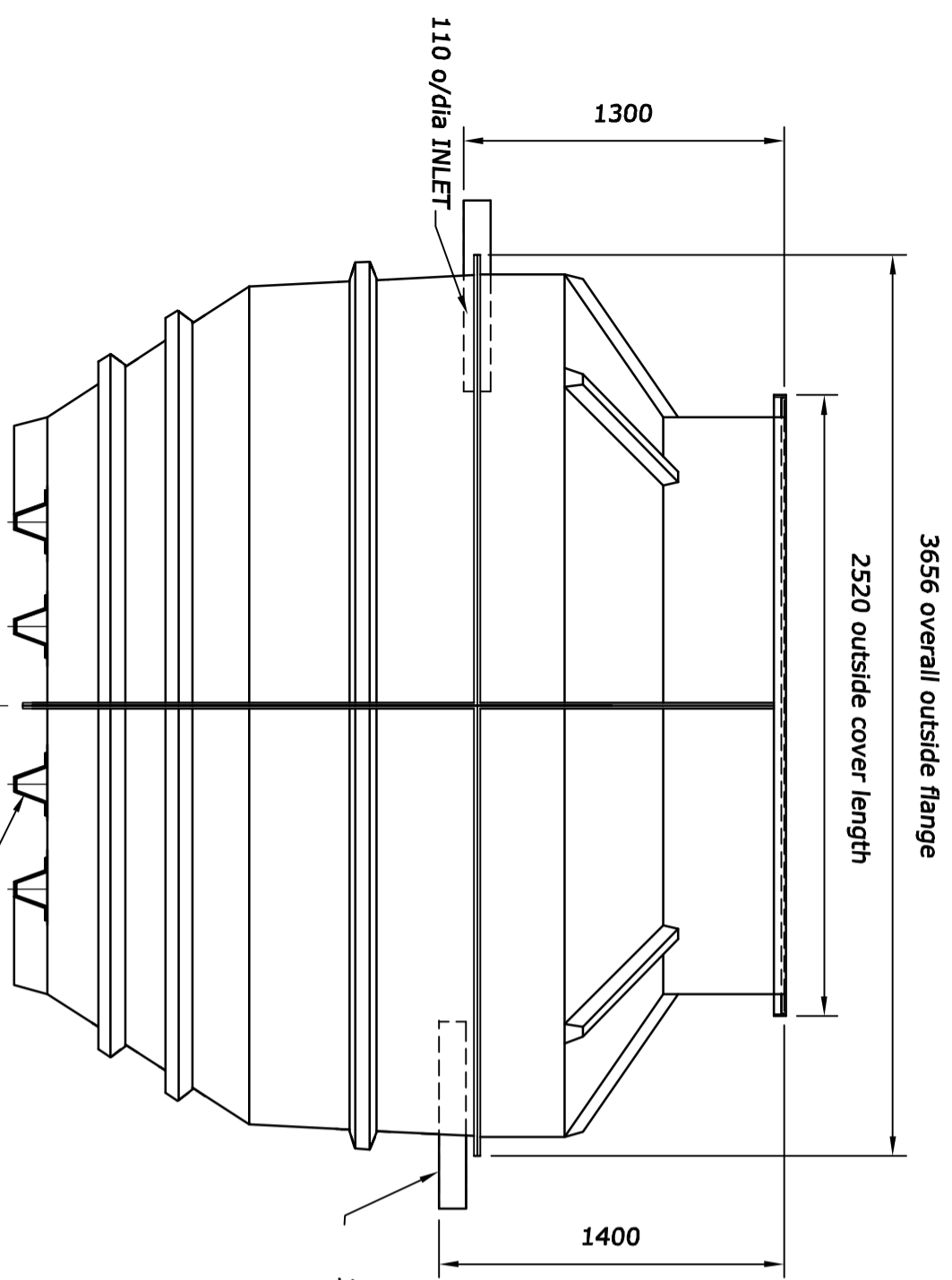


MODEL T24S3 BIODIGESTER



INSTALLATION NOTES

Excavation should allow approximately 300 mm around the units extremities, in this case :- 4.3 m x 3.6 m.
 Unit must be filled with water prior to backfilling.
 Unit can be lowered in place by means of 4 off lifting brackets attached to main flange.
 Unit can be sited directly onto firm concrete base OR it can be 'floated' on wet concrete base. NOTE! if floated then unit must not be filled with water until concrete cured.
 In 'WET GROUND' conditions concrete should be poured to a min'm level of 250 mm above ground anchors.
 Min'm concrete requirements for 'WET GROUND' conditions is :- 8.0 m³

DESIGN LOADINGS

Self supporting when full of water to outlet flange.
 Withstand backfill loads (concrete or gravel) when full of water.
 Withstand water table up to invert of outlet pipe.
 Maximum water capacity to invert of outlet = 10,400 ltrs
 Cover will take frequent man access loads ie. 1 man on each sector of cover.