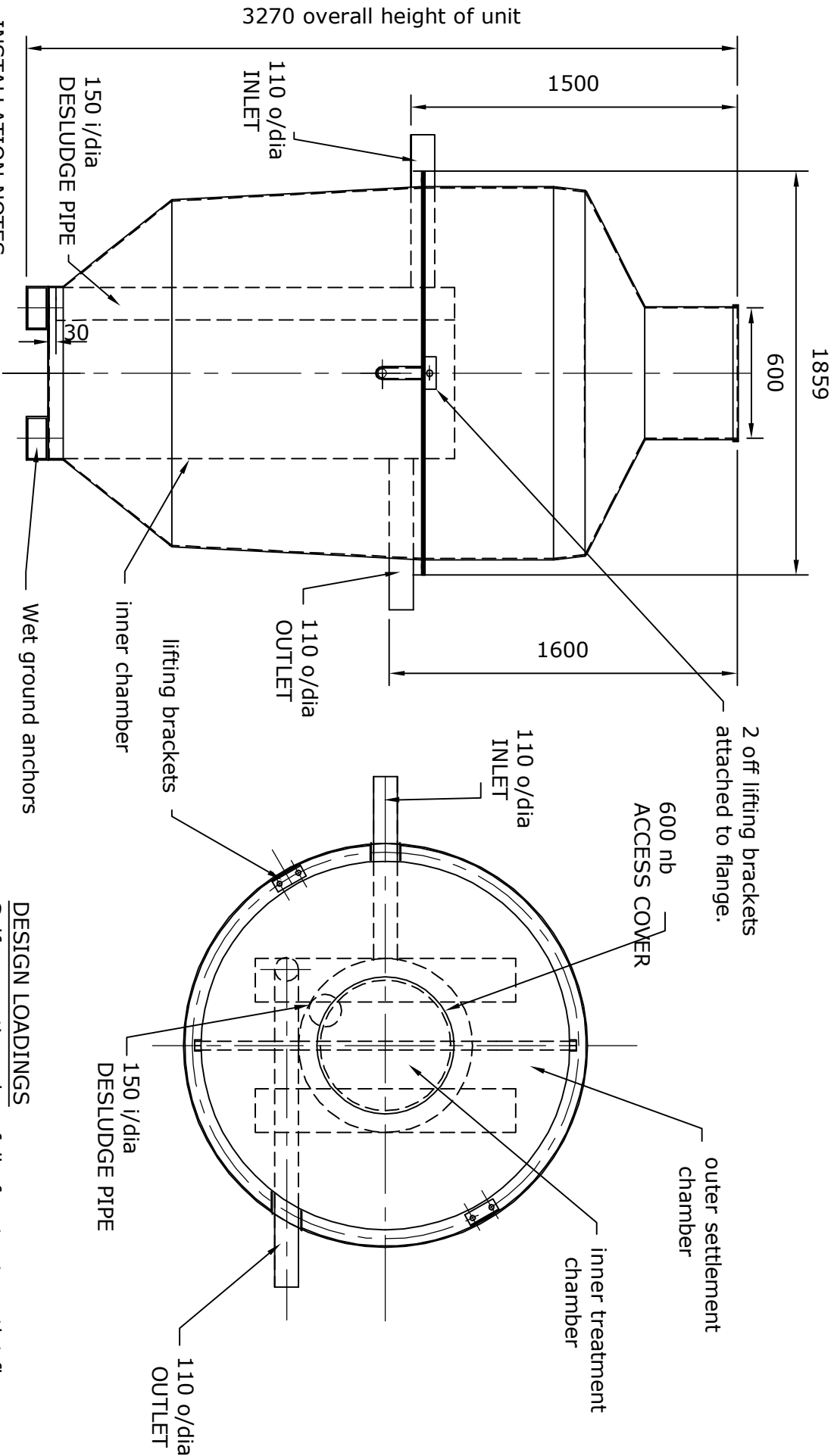


# MODEL T6S4 BIODIGESTER



## INSTALLATION NOTES

Excavation should allow approximately 300 mm around the units extremities, in this case :- 2.46 m x 2.46 m

Unit must be filled with water prior to backfilling.

Unit can be lowered in place by means of 2 off lifting brackets attached to main flange across the diameter.

In 'WET GROUND' conditions concrete should be poured to a min'm level of 250 mm above ground anchors.

Min'm concrete requirements for 'WET GROUND' conditions is :- 3.0 m<sup>3</sup>

## DESIGN LOADINGS

Self supporting when full of water to outlet flange.

Withstand backfill loads (concrete or gravel) when full of water.

Withstand water table up to invert of outlet pipe.  
Maximum water capacity to invert of outlet = 2810 ltrs

June 2004

T6S/GEN/04

REV 5